

Brentwood, California

SHOPS AT COUNTRY CLUB

COUNTRY CLUB DRIVE AT BALFOUR ROAD • BRENTWOOD, CALIFORNIA • 94513



DEBORAH PERRY
925.279.5561
dperry@colliersparrish.com

ERIC ERICKSON
925.279.5580
eerickson@colliersparrish.com

COLLIERS INTERNATIONAL
1850 Mt. Diablo Blvd, Suite 200
Walnut Creek, California, 94596
Phone: 925.279.0120
Fax: 925.279.0450
www.colliersparrish.com/walnutcreek

PROPERTY HIGHLIGHTS

- ▶ Corner location with a Signalized intersection, at all traffic movements
- ▶ Adjacent to High-End Residential Neighborhood
- ▶ Near by four championship eighteen hole golf courses
- ▶ Located on commuter route to Walnut Creek, via Marsh Creek Road
- ▶ Across from Heritage High School & Middle School

THE PROPERTY

- ▶ 12,883± Available Square Footage on 2.31 Acres (Divisible to 1,000±)

DEMOGRAPHICS (2008)

	1 mile	3 mile	5 mile
Population	2,372	48,487	118,558
Daytime Population	1,284	10,329	27,663
Median Household Income	\$99,137	\$96,973	\$93,417

TRAFFIC COUNT (2007)

21,200 aadt - Balfour Road, Brentwood CA

COLLIERS
INTERNATIONAL

Brentwood, California

SHOPS AT COUNTRY CLUB

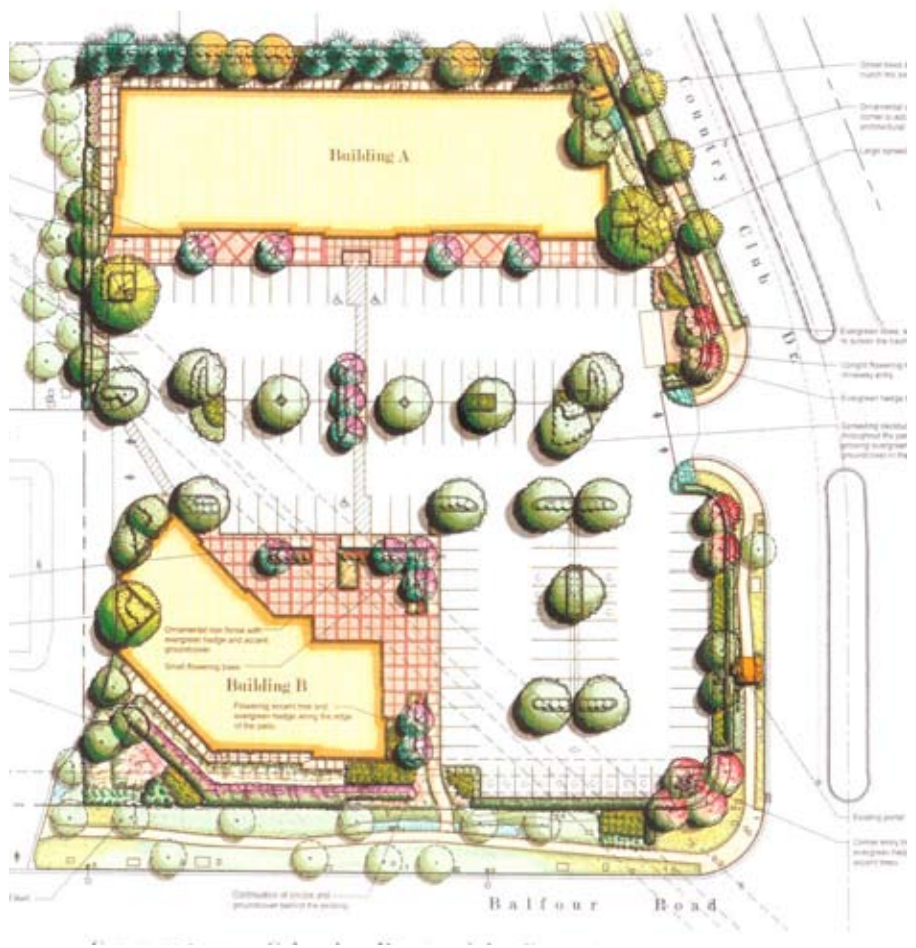
COUNTRY CLUB DRIVE AT BALFOUR ROAD • BRENTWOOD, CALIFORNIA • 94513



DEBORAH PERRY
925.279.5561
dperry@colliersparrish.com

ERIC ERICKSON
925.279.5580
eerickson@colliersparrish.com

COLLIERS INTERNATIONAL
1850 Mt. Diablo Blvd, Suite 200
Walnut Creek, California, 94596
Phone: 925.279.0120
Fax: 925.279.0450
www.colliersparrish.com/walnutcreek



This document has been prepared by Colliers International for advertising and general information only. Colliers International makes no guarantees, representations or warranties of any kind, expressed or implied, regarding the information including, but not limited to, warranties of content, accuracy and reliability. Any interested party should undertake their own inquiries as to the accuracy of the information. Colliers International excludes unequivocally all inferred or implied terms, conditions and warranties arising out of this document and excludes all liability for loss and damages arising there from.

Colliers International is a worldwide affiliation of independently owned and operated companies.

COLLIERS
INTERNATIONAL

Brentwood, California

SHOPS AT COUNTRY CLUB

COUNTRY CLUB DRIVE AT BALFOUR ROAD • BRENTWOOD, CALIFORNIA • 94513



DEBORAH PERRY
925.279.5561
dperry@colliersparrish.com

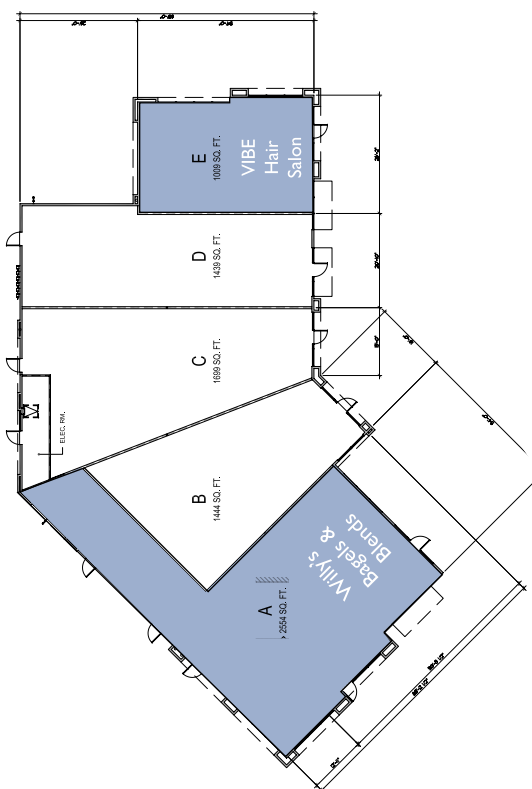
ERIC ERICKSON
925.279.5580
eerickson@colliersparrish.com

COLLIERS INTERNATIONAL
1850 Mt. Diablo Blvd, Suite 200
Walnut Creek, California, 94596
Phone: 925.279.0120
Fax: 925.279.0450
www.colliersparrish.com/walnutcreek

This document has been prepared by Colliers International for advertising and general information only. Colliers International makes no guarantees, representations or warranties of any kind, expressed or implied, regarding the information including, but not limited to, warranties of content, accuracy and reliability. Any interested party should undertake their own inquiries as to the accuracy of the information. Colliers International excludes unequivocally all inferred or implied terms, conditions and warranties arising out of this document and excludes all liability for loss and damages arising there from.

Colliers International is a worldwide affiliation of independently owned and operated companies.

Building B
390 W. Country Club Drive



Building A
380 W. Country Club Drive

